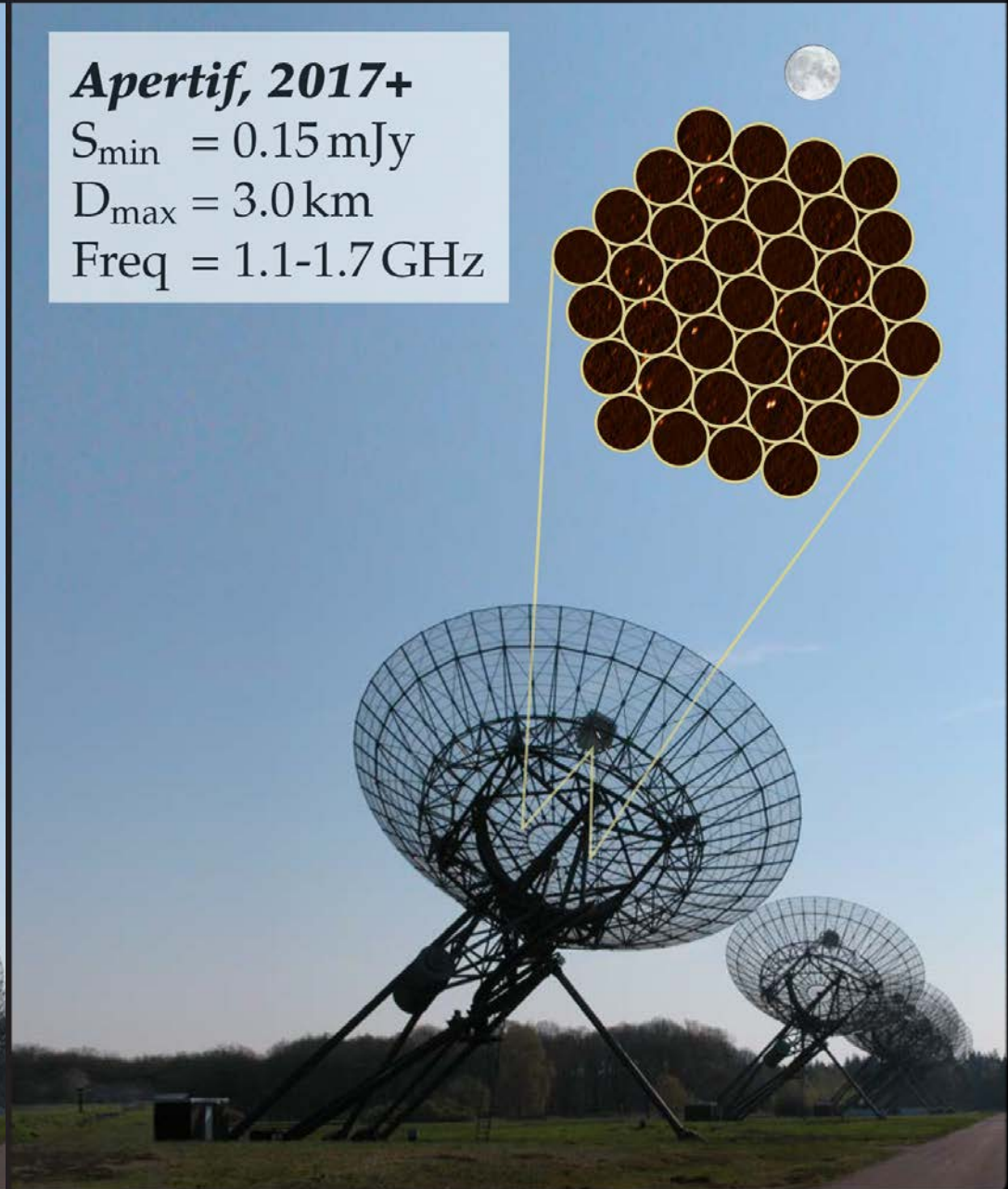


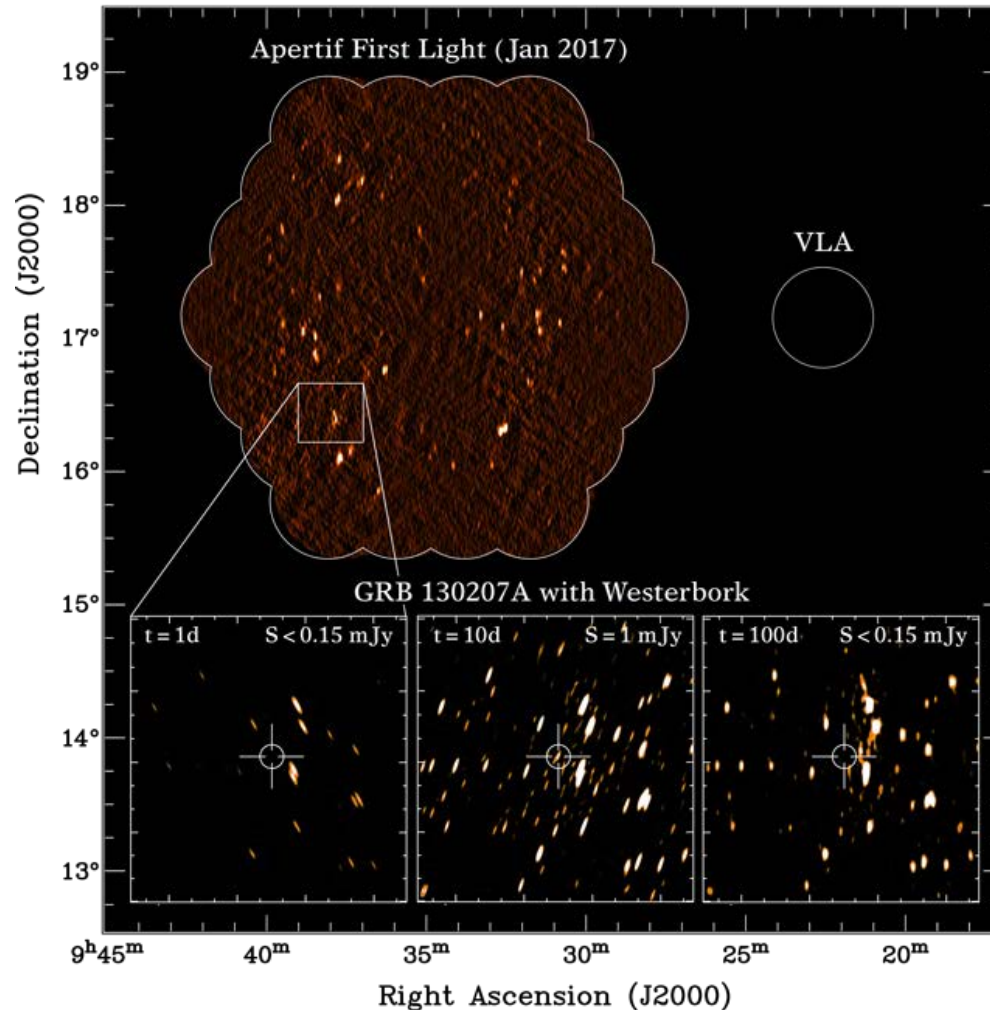
**Westerbork
Previously**



Apertif, 2017+
 $S_{\min} = 0.15 \text{ mJy}$
 $D_{\max} = 3.0 \text{ km}$
Freq = 1.1-1.7 GHz



***A 9 sq. deg. Field for Afterglow Emission:
First-light image vs. afterglow GRB 130207A***



Fly's Eye Mode for Prompt Emission:
100 deg² field, real-time detection, arcsec localisation

